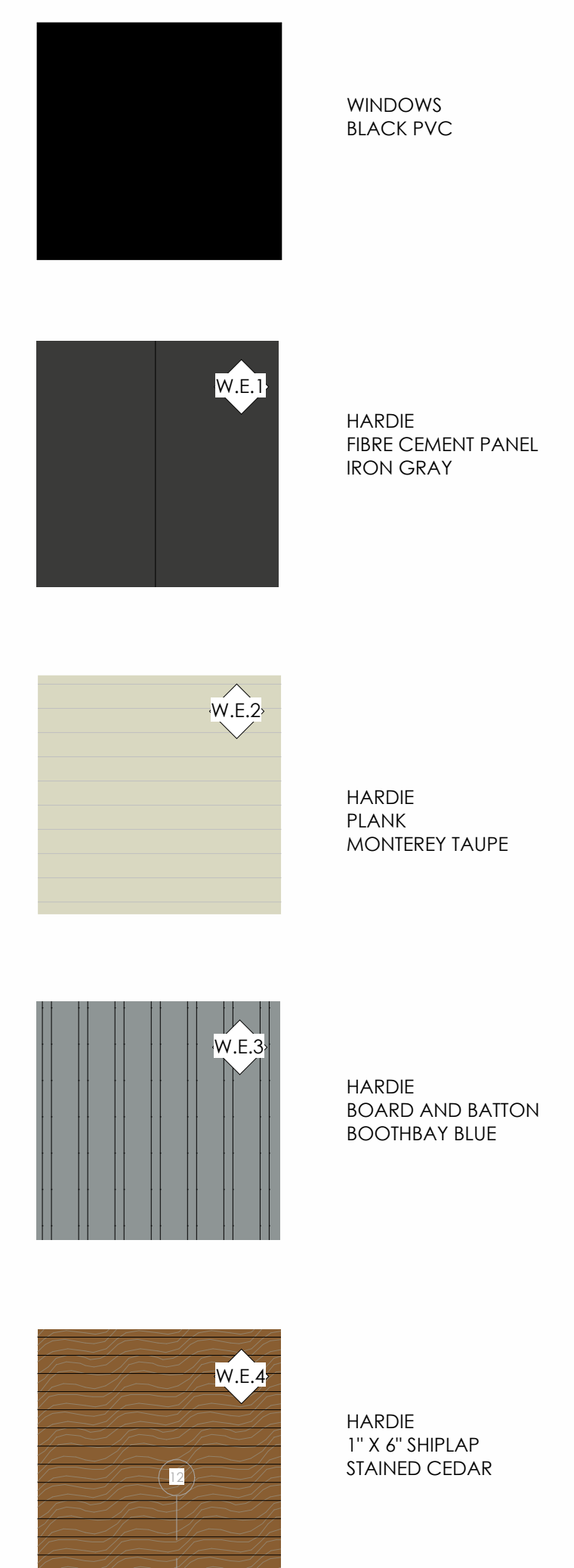
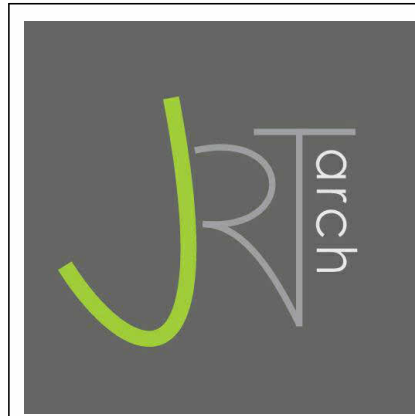




① ELEVATION - EAST - BLDG. B  
1/4" = 1'-0"



② ELEVATION - SOUTH - BLDG. B  
1/4" = 1'-0"



**JOYCE REID TROOST ARCHITECTURE**  
2515 GLENAYR DRIVE  
NANAIMO, BC V9S 3R9  
joyce@jrtarchitecture.com  
250.714.8749  
jrtarchitecture.com

THE DRAWINGS, DESIGN IDEAS AND FEATURES OF CONSTRUCTION DEPICTED HEREIN ARE THE EXCLUSIVE PROPERTY OF JOYCE REID TROOST ARCHITECT. ALL COMMON COPY AND PROPERTY RIGHTS ARE EXPRESSLY RESERVED. THEY ARE NOT TO BE REPRODUCED, COPIED, REPRODUCED OR USED FOR ANY PURPOSES NOR ARE THEY TO BE ASSIGNED TO A THIRD PARTY WITHOUT EXPRESS WRITTEN CONSENT. IN THE EVENT OF ANY UNAUTHORIZED USE OF THESE PLANS BY A THIRD PARTY, THE THIRD PARTY SHALL NOT HOLD JOYCE REID TROOST ARCHITECT RESPONSIBLE.

ARCH. STAMP

**TOWNHOMES**  
1001, 1003, 1005, 1007 Hogler Crescent  
NANAIMO, BC

**RECEIVED**  
DP1353  
2024-SEP-19  
Current Planning

CLIENT  
HOGLER ENTERPRISES

REV. DATE	NUMBER	DESCRIPTION
21.05.24	1	ISSUED FOR DP
02.08.24	3	REISSUED FOR DP

DATE  
JUNE 15, 2022

SCALE  
As indicated


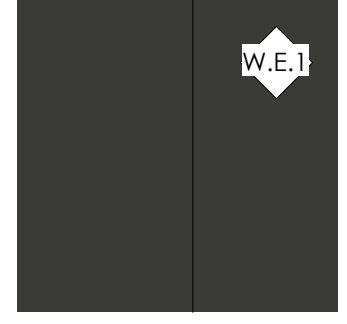
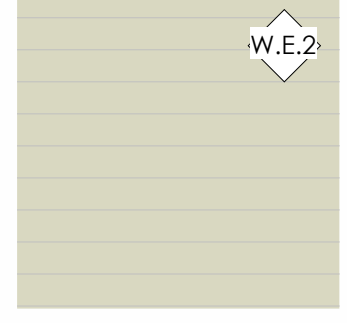
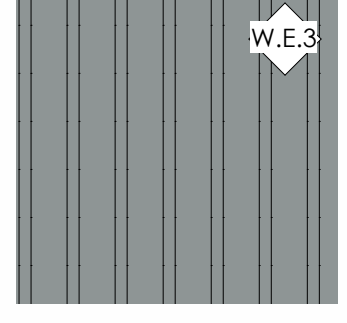
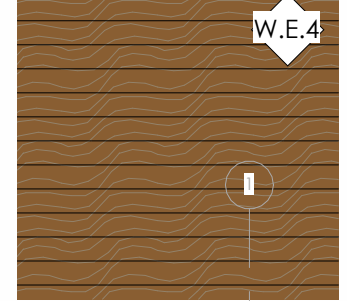
DRAWN: CC CHECKED: JRT APPROVED: JRT

EAST/SOUTH ELEVATIONS - BLDG. B

**A200**

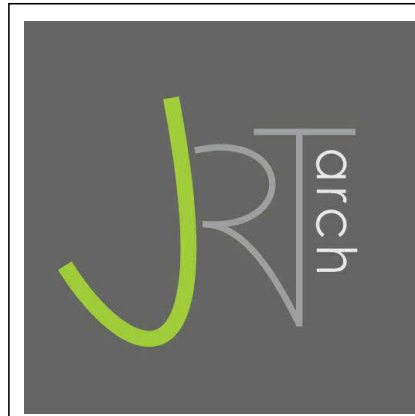


① ELEVATION - WEST BLDG. B  
1/4" = 1'-0"

-  WINDOWS  
BLACK PVC
-  W.E.1  
HARDIE  
FIBRE CEMENT PANEL  
IRON GRAY
-  W.E.2  
HARDIE  
PLANK  
MONTEREY TAUPE
-  W.E.3  
HARDIE  
BOARD AND BATTON  
BOOTHBAY BLUE
-  W.E.4  
HARDIE  
1" X 6" SHIPLAP  
STAINED CEDAR



② ELEVATION - NORTH - BLDG. B  
1/4" = 1'-0"



**JOYCE REID TROOST ARCHITECTURE**  
 2515 GLENAYR DRIVE  
 NANAIMO, BC V9S 3R9  
 joyce@jrtarchitecture.com  
 250.714.8749  
 jrtarchitecture.com

THE DRAWINGS, DESIGN IDEAS AND FEATURES OF CONTRIBUTION DEPICTED HEREIN ARE THE EXCLUSIVE PROPERTY OF JOYCE REID TROOST ARCHITECT. ALL COMMON COPY AND PROPERTY RIGHTS ARE EXPRESSLY RESERVED. THEY ARE NOT TO BE REPRODUCED, COPIED, REPRODUCED OR USED FOR ANY PURPOSES NOR ARE THEY TO BE ASSIGNED TO A THIRD PARTY WITHOUT EXPRESS WRITTEN CONSENT. IN THE EVENT OF ANY UNAUTHORIZED USE OF THESE PLANS BY A THIRD PARTY, THE THIRD PARTY SHALL NOT HOLD JOYCE REID TROOST ARCHITECT RESPONSIBLE.

ARCH. STAMP

**TOWNHOMES**  
 1001, 1003, 1005, 1007 Hogler Crescent  
 NANAIMO, BC

**RECEIVED**  
**DP1353**  
 2024-SEP-19  
 Current Planning

CLIENT  
 HOGLER ENTERPRISES

REV. DATE	NUMBER	DESCRIPTION
21.05.24	1	ISSUED FOR DP
02.08.24	3	REISSUED FOR DP

DATE  
 JUNE 15, 2022

SCALE  
 As indicated

DRAWN: CC CHECKED: JRT APPROVED: JRT

WEST/NORTH ELEVATIONS - BLDG. B

A201





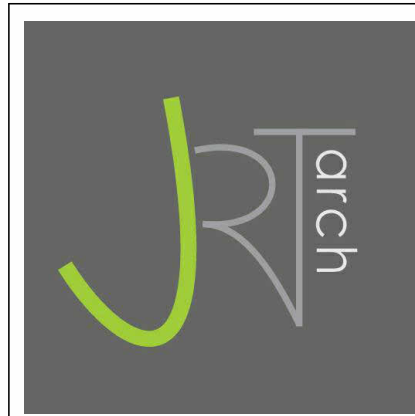
ELEVATION - STREET VIEW - NORTH - BLDG.  
 B  
 3/16" = 1'-0"



STREET PERSPECTIVE



ELEVATION - AVG. FG - BLDG. B  
 3/16" = 1'-0"



**JOYCE REID TROOST ARCHITECTURE**  
 2515 GLENAYR DRIVE  
 NANAIMO, BC V9S 3R9  
 joyce@jrtarchitecture.com  
 250.714.8749  
 jrtarchitecture.com

THE DRAWINGS, DESIGN IDEAS AND FEATURES OF CONSTRUCTION DEPICTED HEREIN ARE THE EXCLUSIVE PROPERTY OF JOYCE REID TROOST ARCHITECT. ALL COMMON COPY AND PROPERTY RIGHTS ARE EXPRESSLY RESERVED. THEY ARE NOT TO BE REPRODUCED, COPIED, REPRODUCED OR USED FOR ANY PURPOSES NOR ARE THEY TO BE ASSIGNED TO A THIRD PARTY WITHOUT EXPRESSED WRITTEN CONSENT. IN THE EVENT OF ANY UNAUTHORIZED USE OF THESE PLANS BY A THIRD PARTY, THE THIRD PARTY SHALL NOT HOLD JOYCE REID TROOST ARCHITECT RESPONSIBLE.

ARCH. STAMP

**TOWNHOMES**  
 1001, 1003, 1005, 1007 Hogler Crescent  
 NANAIMO, BC

**RECEIVED**  
**DP1353**  
**2024-SEP-19**  
CLIENT PLANNING

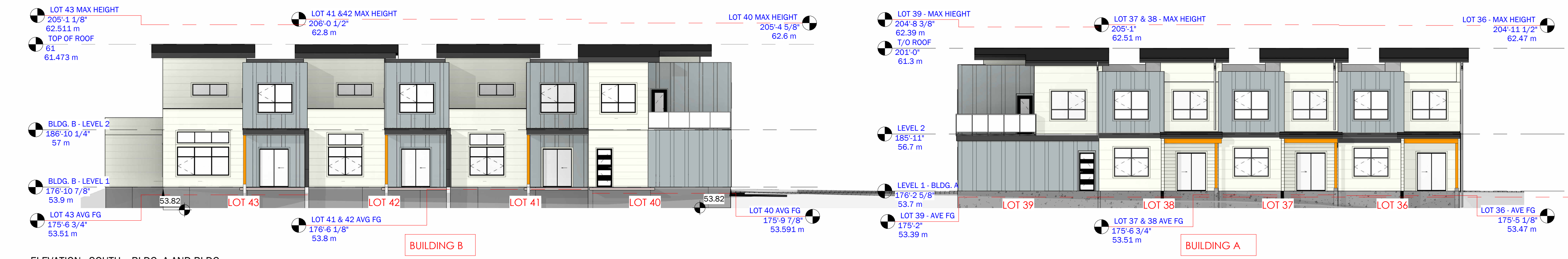
CLIENT  
 HOGLER ENTERPRISES

REV. DATE	NUMBER	DESCRIPTION
21.05.24	1	ISSUED FOR DP

DATE	JUNE 15, 2022
SCALE	3/16" = 1'-0"
DRAWN: CC	CHECKED: JRT
APPROVED: JRT	

SOUTH/NORTH ELEVATIONS - BLDG.  
 B - AVG. FG  
**A202**

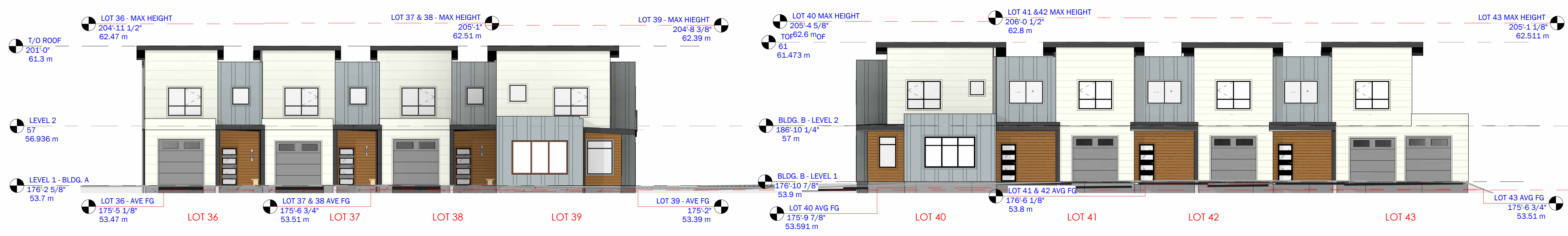




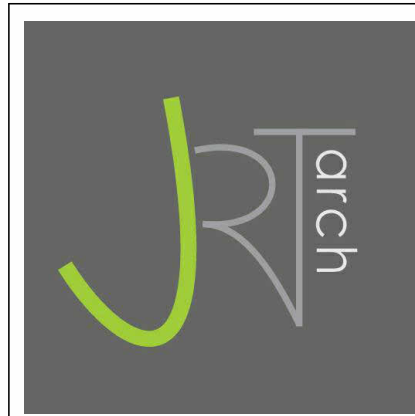
ELEVATION - SOUTH - BLDG. A AND BLDG. B  
 1" = 10'-0"



1 STREET VIEW - BLDG. A AND BLDG. B



ELEVATION - BLDG. A & BLDG. B - NORTH  
 1" = 10'-0"



**JOYCE REID TROOST ARCHITECTURE**  
 2515 GLENAYR DRIVE  
 NANAIMO, BC V9S 3R9  
 joyce@jrtarchitecture.com  
 250.714.8749  
 jrtarchitecture.com

THE DRAWINGS, DESIGN IDEAS AND FEATURES OF CONSTRUCTION DEPICTED HEREIN ARE THE EXCLUSIVE PROPERTY OF JOYCE REID TROOST ARCHITECT. ALL COMMON COPY AND PROPERTY RIGHTS ARE EXPRESSLY RESERVED. THEY ARE NOT TO BE REPRODUCED, COPIED, REPRODUCED OR USED FOR ANY PURPOSES NOR ARE THEY TO BE ASSIGNED TO A THIRD PARTY WITHOUT EXPRESS WRITTEN CONSENT. IN THE EVENT OF ANY UNAUTHORIZED USE OF THESE PLANS BY A THIRD PARTY, THE THIRD PARTY SHALL NOT HOLD JOYCE REID TROOST ARCHITECT RESPONSIBLE.

ARCH. STAMP

**TOWNHOMES**  
 1001, 1003, 1005, 1007 Hogler Crescent  
 NANAIMO, BC

**RECEIVED**  
 DP1353  
 2024-SEP-19  
 CURRENT PLANNING

CLIENT  
 HOGLER ENTERPRISES

REV. DATE	NUMBER	DESCRIPTION
21.05.24	1	ISSUED FOR DP
02.08.24	3	REISSUED FOR DP

DATE  
 SCALE  
 DRAWN: CC CHECKED: JRT APPROVED: JRT

JUNE 15, 2022  
 1" = 10'-0"  
 SOUTH/NORTH ELEVATIONS - BLDG. A AND BLDG. B  
**A203**